



# BRIDGING THE GAP: HOW SUPPORTIVE CARE TRANSFORMS THE CANCER JOURNEY

## CANCER IS ON THE RISE. WE NEED TO ACT NOW.

Cancer is the second leading cause of death in the U.S.



Cancer accounts for nearly 1 in 5 deaths.



By 2030, it may surpass heart disease as the leading cause of death.



About 40% of Americans will face a cancer diagnosis in their lifetime.

We must improve prevention, treatment, and support for everyone affected.

## ACCESS TO CANCER CARE IS UNEQUAL, BUT THAT NEEDS TO CHANGE

Not everyone has the same chance when it comes to receiving cancer care, and this inequity leads to devastating outcomes.



Black women are 40% more likely to die from breast cancer than white women despite lower incidence rates.



Latino and Black communities often struggle to access early detection and timely treatment.



Low-income individuals are at higher risk for advanced cancer due to delays in seeking and receiving care.

These disparities must be addressed to ensure fair treatment for all.

## CLINICAL CARE IS ESSENTIAL, BUT IT'S NOT ENOUGH

Many people with cancer are fighting their illness without the complete support they need.

Over 90% report symptoms that significantly impact their quality of life.

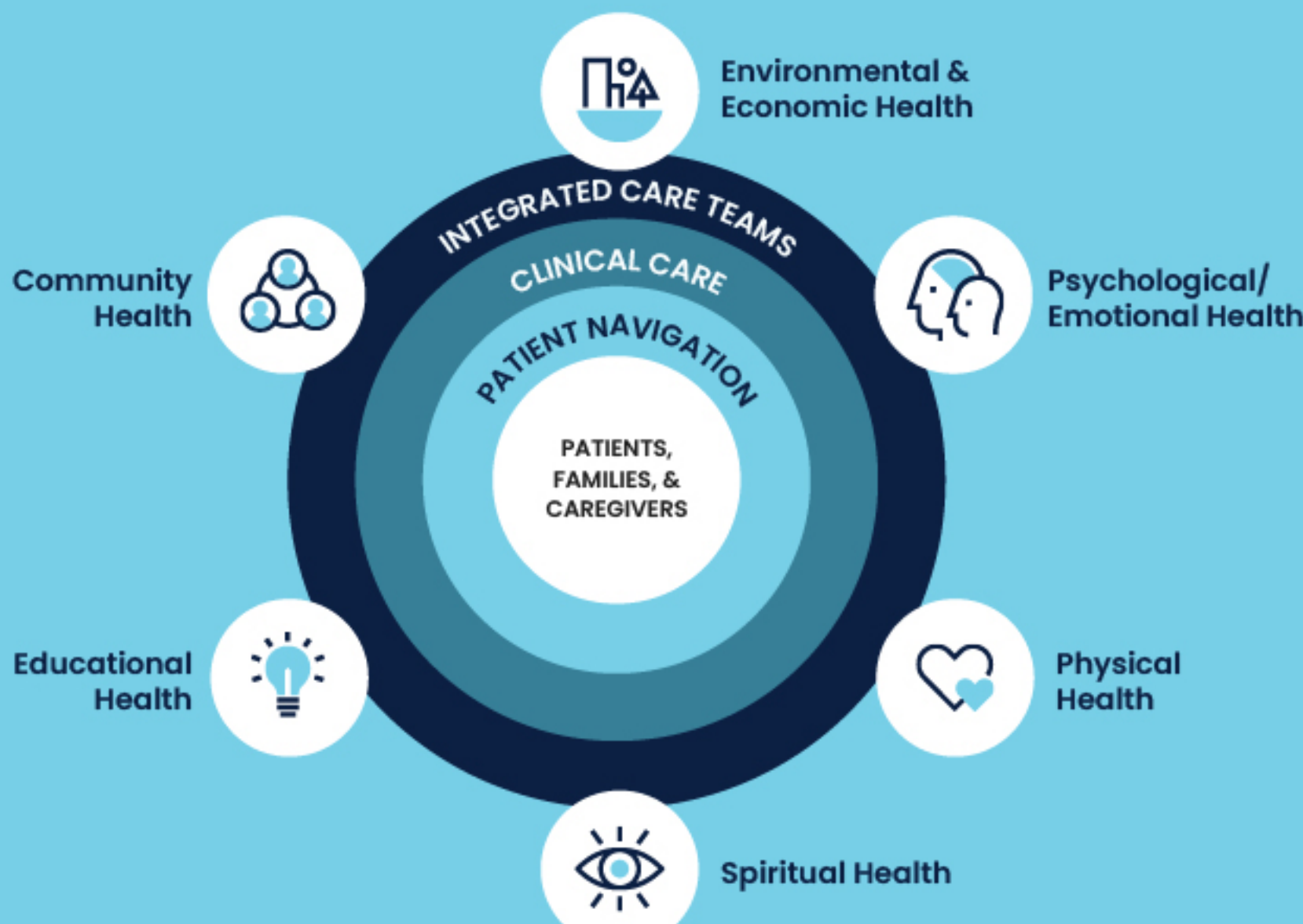
CLINICAL CARE OFTEN OVERLOOKS CRUCIAL AREAS LIKE:

- Effective pain management
- Emotional support
- Impact on relationships
- Access to resources for informed decision-making

This gap underscores the urgent need to integrate supportive care into treatment plans.

## SUPPORTIVE CANCER CARE ADDRESSES THE WHOLE PERSON THROUGHOUT THEIR JOURNEY

Supportive cancer care offers a comprehensive approach that ensures needs are met throughout the cancer continuum.



STUDIES SHOW COORDINATED SUPPORTIVE CARE LEADS TO:

- Better treatment outcomes
- Improved quality of life for people with cancer and their caregivers
- Higher value care and lower healthcare costs

## BUT AWARENESS OF SUPPORTIVE CARE OPTIONS IS LOW

While 80% of people with cancer and healthcare practitioners agree that equitable access to supportive cancer care is essential for better outcomes...

...yet only 30% of providers believe patients actually have that access.

This means 70% recognize a significant gap in care for many patients.



## EXPANDING EQUITABLE ACCESS TO SUPPORTIVE CARE

### WHAT WE DO

Together for Supportive Cancer Care is a coalition that brings together a diverse range of organizations, including:

- PATIENT ADVOCATES
- HEALTHCARE PRACTITIONERS
- COMMUNITY ORGANIZATIONS
- EMPLOYERS AND INSURERS
- PHARMACEUTICAL COMPANIES
- POLICY-FOCUSED ORGANIZATIONS

### OUR VISION

We envision a country where every person with cancer has early and equitable access to comprehensive supportive care.

### OUR MISSION

Our mission is to make supportive cancer care the standard for treatment, ensuring the needs of patients and their caregivers are met at every stage—diagnosis, treatment, and survivorship.

### HOW WE WORK

We focus on three key pathways to expand equitable access to supportive cancer care:



#### Policy

Advocating for policies that address the entire cancer journey.



#### Research

Demonstrating the impact of supportive cancer care through data.



#### Employers

Supporting and expanding employers' commitment to supportive cancer care.

## JOIN THE MOVEMENT TO IMPROVE CANCER CARE FOR EVERYONE



WE ALL HAVE A ROLE IN THIS FIGHT.

Visit [www.supportivecancercare.org](http://www.supportivecancercare.org) to learn how you can help improve access to cancer care.